

TRULIVA

Strive hard for the health of human life

Every detail has been meticulously polished
Constantly break through oneself in craftsmanship and technology
The spirit of pursuing excellence never stops

TRULIVA



To support consumer back to the " True Live " of the world

Bring healthy for you and planet cultivating a brighter future



Qinyuan Group Co., LTD

✉ commercial@trulivaglobal.com

🌐 <https://www.qinyuan.cn/>

📍 No. 358, Xingci 1st Road, Hangzhou Bay New Area, Ningbo City, Zhejiang Province

5,000,000⁺ people

Truliva provides services and guarantees for the drinking water health of over 500 million people worldwide through continuous technological innovation rigorous quality assurance and inclusive market promotion



50,000⁺ m²

The modern large-scale production base covers an area of over 50,000 square meters, with an annual production capacity of over 16 million filter cartridges and 2 million household water purifiers



26⁺ years

Truliva was established in 1998, specializing in the development, production and sales of a series of water related household appliances such as water purification equipment, drinking water equipment, and commercial water treatment equipment



13,000⁺ stores

Truliva has a strong sales channel in China, with nearly 13,000 sales outlets covering 34 provinces, municipalities and autonomous regions across the country



Milestone



1998

- Truliva was established and successfully developed a far-infrared mineralized water purifier



2008

- The research and development and industrialization of energy-saving drinking water advanced treatment series equipment have won the second prize of the National Science and Technology Award



2022

- Become the first factory in the water purification industry to be awarded the six-star zero-carbon certification



2007

- Truliva has become the leading unit of the China Water Purifier and System Standardization Working Group



2014

- Unilever has taken a stake in Truliva and both parties are jointly committed to the water purification industry



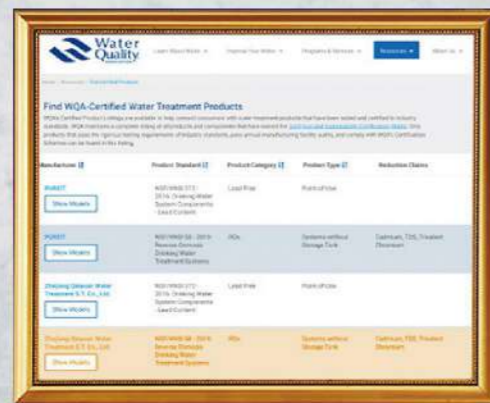
2024

- Mr. Ye, the founder of Truliva, bought back the shares of Truliva held by Unilever and opened a new chapter

Honor

3000⁺ clean drinking water patents globally

National science and technology award



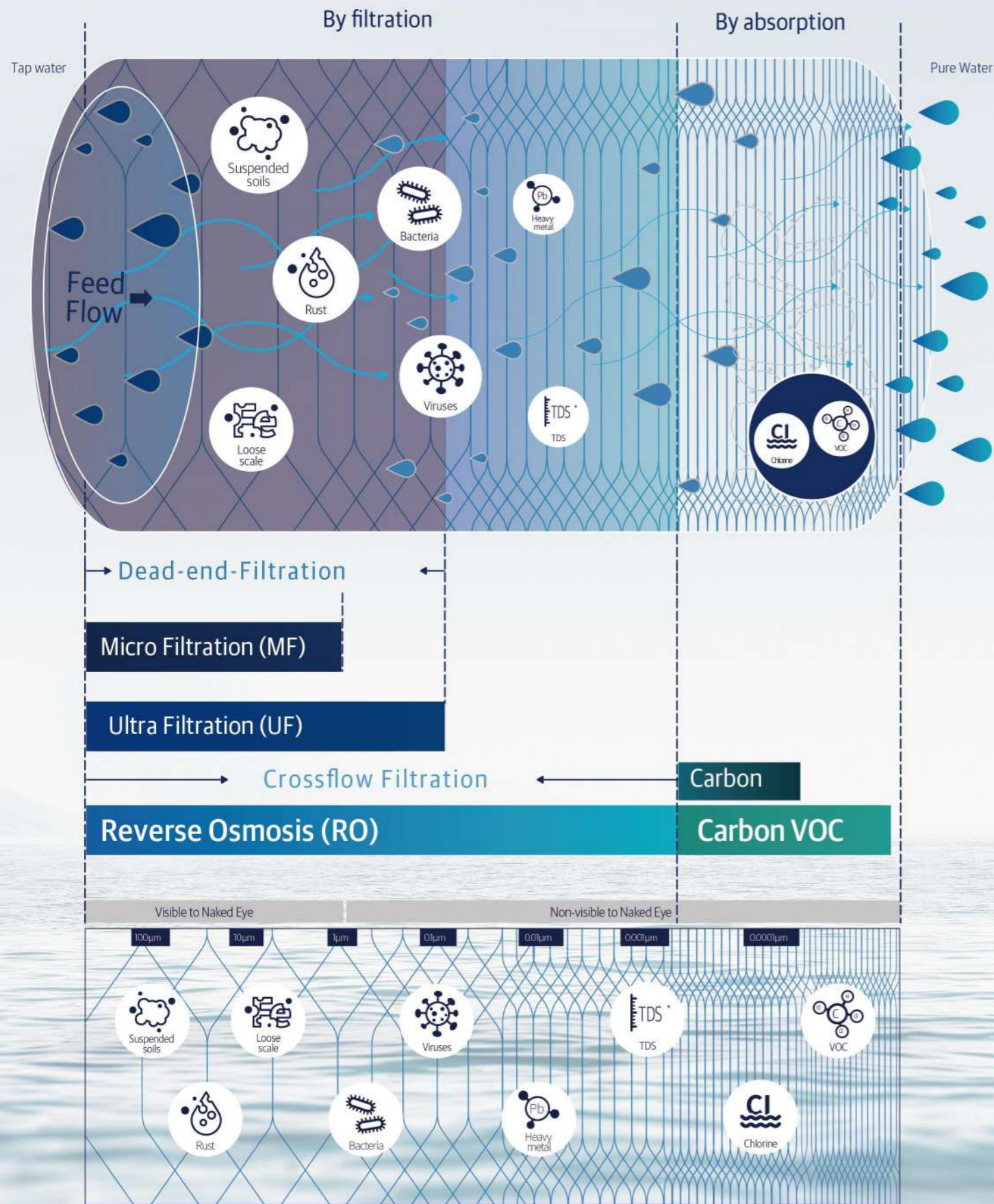
WQA gold standard certificate

Only a few kitchen UTS RO products in the world have obtained the WQA gold standard certificate. Verification of purification performance, material safety and mechanical strength according to NSF58



Authoritative certifications and tests globally

Effective removal of different contaminants requires different technologies



7-layer Filtration

Up to 99.9% filtration of emerging pollutants
104 harmful substances



Folding Polypropylene

Filters out large particles such as sediment, rust, etc.

Front activated carbon

Adsorb residual chlorine, abnormal color and odor

Polypropylene

Filter out carbon powder, turbidity and other impurities

RO Membrane

Filter out emerging pollutants, heavy metals, bacteria viruses, antibiotics

Non-woven fabric

Further filter to protect the carbon rods

Carbon

Adsorb residual chlorine and disinfection by-products to improve taste

Ultraviolet sterilization

Sterilization at the end of the effluent

This page has carried out visualization editing and display based on the data foundation of theoretical principles. [Theoretical principles data source: Water & Process Solutions FILMTEC™ Reverse Osmosis Membranes Technical Manual from Dow]
*Total Dissolved Solids (TDS) is not a type of contaminant, but rather a term used to describe the inorganic salts and small amounts of organic matter that are present in a water solution. The principal constituents typically include metal ions, as well as sodium and potassium cations, and carbonate, hydrogen carbonate, chloride, sulfate, and nitrate anions.

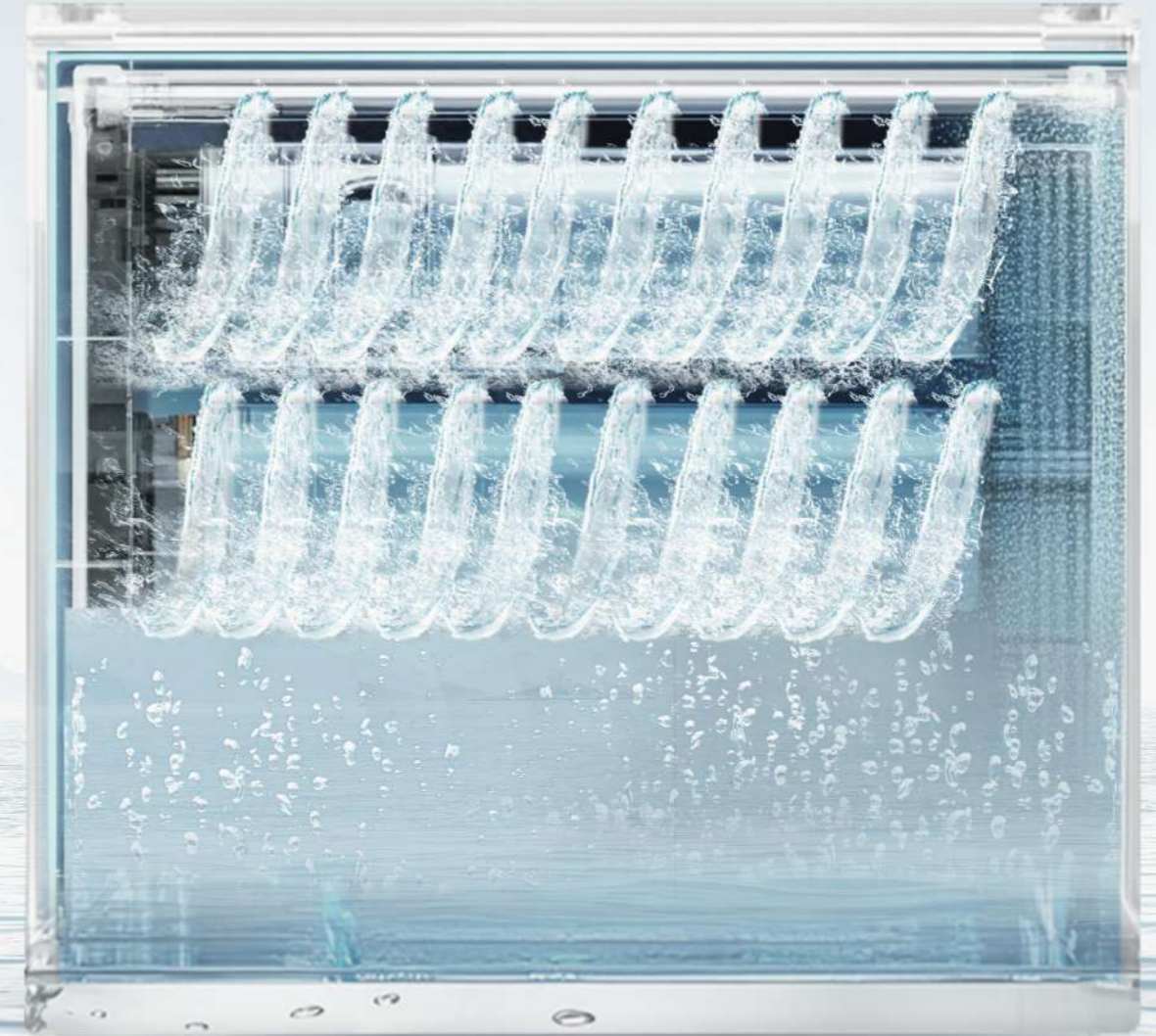
8 years long-lasting RO membrane

Pore size is more uniform and dense
smooth and not easy to scale

More pure water
for longer

Anti-fouling recirculation flushing system

Highly efficient anti-scaling
Protect the lifespan of the filter cartridge



New generation of crystal ceramic heating Technological innovation

From heat storage tank to crystal ceramic heating
More professional



Separate hot and cold water flow, no mixing of water, no temperature fluctuations

Achieve precise temperature control and accurate water output



Instant Heating Technology 3.0

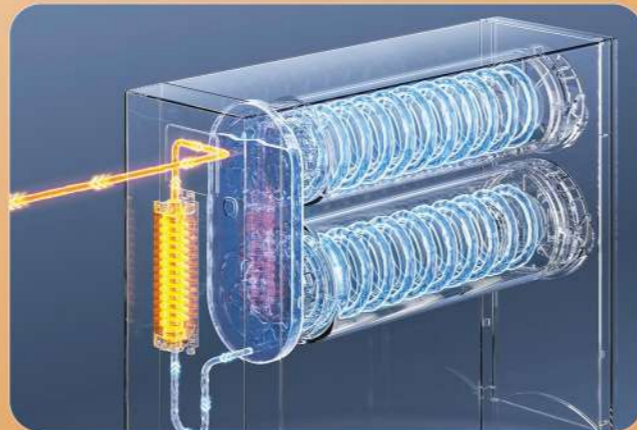
Heating substrate: New generation crystal ceramic heating element

Heating efficiency: ⬆️ 25%

Hot water flow rate: ⬆️ 32%

High temperature resistance: >1700°C

Structural resistance: ★★★★★



We are providing a comprehensive water solution for every facet of life

- Tap water
- Coarse filtered water
- Filtered water
- Pure water
- Soft water
- Hot water



Kitchen

application



Kitchen application

Under-the-sink RO series

Under-the-sink RO



440*145*420mm

2 filter cartridges, 7-layer filtration

Filter out 104 kinds of harmful substances

99.9%

A removal rate of

2.66L/min

constant-high flow

By 3 seconds

Instant hot

1000

GPD

9000L

total purification capacity

80%

water efficiency

Filter

PCB/RO



UR-S61096H

Under-the-sink RO Product

Premium



UR-Q6698 / X-Q7098



All in one



New filter cartridge structure

440*145*420/465*205*480 mm

- 2 filter cartridges, 6-layer filtration
Effectively filter 104 kinds of harmful substance
- For pure, cold, bubble, hot, tap cold tap hot
- 99.9%
A removal rate of
- 600
GPD
- 1.5L/min
constant high flow
- 7500L
total purification capacity
- Cold 5° (by compressor)
- Filter
PCM/RO



UR-A61290

UR-S61296



New filter cartridge structure



Smart faucet

440*145*420mm

- 2 filter cartridges, 7-layer filtration
Filter out 104 kinds of harmful substances
- 1200
GPD
- Filter
PCB/RO
- 99.9%
A removal rate
- 3L/min
constant-high flow
- 9000L
total purification capacity

Middle range



UR-S5846H



Heating function



High flow rate

405*105*365mm

- 3 filter cartridges
Filter out 81 kinds of harmful substances
- 800
GPD
- Filter
PCP/RO/CTO
- 99.9%
A removal rate of
- 2 L/min
constant-high flow
- 8500L
total purification capacity



UR-S31020



Long-lasting filter cartridge



High flow rate

513*233*540 mm

- 2 filter cartridges, 4-layer filtration
Effectively filter 64 kinds of harmful substances
- 1000
GPD
- Filter
PGP/RO
- 99.9%
A removal rate of
- 2.5L/min
constant high flow
- 6000L
total purification capacity

Entry



UR-Q3626



Popular model in China



high performance cost ratio

405*105*365mm

- 2 filter cartridges, 4-layer filtration
Effectively filter bacterial, virus, heavy metal
- 600
GPD
- Filter
PCP/RO
- 99.9%
A removal rate of
- 1.5L/min
constant-high flow
- 4000L
total purification capacity



UR-S3120



Entry-level model



High flow rate experience

527*301*535 mm

- 2 filter cartridges, 4-layer filtration
Effectively filter bacterial, virus, heavy metal
- 150 (1600G initial with tank)
GPD
- Filter
PCM/RO
- 99.9%
A removal rate of
- 0.15L/min
constant flow
- 4000L
total purification capacity

Kitchen application

Wall-Mounted series

Wall-Mounted RO



W-Q6478

320*430*190mm

Big screen

Cooling + heating

+/-1° (38-98°)

Temperature adjustment

150ml/300ml/450ml

Multiple water volume settings

10°

Cold water

UV sterilization



Wall-Mounted RO

Product

Cooling+hot



W-Q6478

320*430*190mm



W-Q6442

320*430*185mm



W-06412

320*430*185mm

- Big screen
- Cooling + heating
- Temperature adjustment: +/-1° (38-98°)
- Multiple water volume settings: 150ml/300ml/450ml
- Cold water: 10°
- UV sterilization
- Use with UTS RO



Electric cooling



Touch screen

Hot



W-Q5478

320*160*433mm



W-Q5442

320*160*433mm



W-Q5418

320*160*433mm

- Digital screen+Menu selection
- Instant heating
- Temperature adjustment: +/-1° (38-98°)
- Multiple water volume settings: 150ml/300ml/450ml
- Use with UTS RO
- UV sterilization



Heating function



Touch screen

Kitchen application

Under-kitchen front series

Pre-positioned

116*98*319mm

40µm
filtration accuracy

7T/H
constant water flow

Electronic automatic flushing

Pre-positioned

Product



P-07712

Kitchen application

Other series

135*110*63mm

1 filter cartridge, 7-layer filtration

Filter out substances such as rust and sand, and adsorb residual chlorine

Dual mode water dispensing

Easy to install no power required

Washable filter cartridge



O-03912



SC-Q3341

175*151*470mm

- 70µm stainless steel filter cartridge +5µm PP
- 3T/H constant water flow
- 200T total purification capacity



P-A5510

165*82*284mm

- 40µm filtration accuracy
- 5T/H constant water flow
- Manual flushing



U1012

63 x 63 x 250mm

- 1 filter cartridge
Filter sediment, rust and other large particles of impurities
- Visible for filtration
- 8L/min constant water flow
- Filter PP



UU-N3010

375*140*365mm

- 4 filter cartridges
Filter out contaminants such as bacteria
- 99.9% bacterial removal
- 2.2L/min constant water flow
- 2200L total purification capacity
- Filter PP/CTO/UF/CTO



QJ-UL-201A(N)

270*130*310mm

- 2 filter cartridge
- 99.9% bacterial removal
- Preserve minerals
- Visible for filtration
- 2.5L/min constant water flow
- 2000L total purification capacity
- Filter PP/UF



CU3040

240*90*385mm

- 2 filter cartridge
- 99.9% bacterial removal
- 2L/min constant water flow
- 3000L total purification capacity
- Filter UF/CTO

Living room

application



Living room application

Counter-top series

Counter-top RO

450*250*426mm

2 filter cartridges, 6-layer filtration

Filter out 104 kinds of harmful substances

5°C, indoor temperature, 38°C-98 °C

Produce cold and hot water

7 minutes

Ice can be made within

4000L

total purification capacity

Filter

PCB/RO

CR-ZX5170

Counter-top series Product



YCRZ-5109Y



Strong cooling

213*468*390mm

• **2 filter cartridges**

Filter out harmful substances, with a removal rate of up to 99%

• **5°C, indoor temperature, 38°C-98 °C**

Produce cold and hot water

• **Compressor cooling**

can reach 5 °C

• **4000L**

total purification capacity

• **Filter**

PPCF/RO



Adjustable temperature



CR-Z7170



Cooling

450*250*426mm

• **2 filter cartridges**

Filter out 104 kinds of harmful substances

• **10°C, indoor temperature, 38°C-98 °C**

Produce cold and hot water

• **Electric cooling**

can reach 10 °C

• **6.8L**

total capacity of water tank

• **4000L**

total purification capacity

• **Filter**

PPC/RO



Adjustable temperature



CR-Z5151



Cooling

450*250*426mm

• **1 filter cartridge**

The removal rate of harmful substances is as high as 99.99%

• **10°C, indoor temperature, 38°C-98 °C**

Produce cold and hot water

• **Electric cooling**

can reach 10 °C

• **6.2L**

total capacity of water tank

• **4000L**

total purification capacity

• **Filter**

PPCRO



Entry level

Living room application

Counter-top series

Pitcher

116*98*319mm

4-layer filtration

Four-layer fine filtration and deep purification

99%
bacterial removal

3.5L
water tank

100L
total purification capacity



Counter-top series Product



GS-03115



Four-layer filtration



Total net water volume

263*135*282mm

- 4-layer filtration
- Effectively make water soft
- 3.5L water tank
- 80L total purification capacity



GS-Q5112



Four-layer filtration



Total net water volume

322*208*218mm

- 4-layer filtration
- Effectively make water soft
- 7.5L water tank
- 100L total purification capacity



Full-house application

Full-house series

Whole-house application products

Full-house central purifier



SC-Q3210i

360*318*814mm

Flow rate: 2.4T/h

Total filter life: 300T

Full-house central purifier Product



SC-Q3110i/SC-Q3210i



360*318*534mm/360*318*814mm

- Flow rate: 1.2T/h / 2.4T/h
- Total filter life: 150T / 300T

Full-house softener Product



SS-Q3110i/SS-Q3210i



448*321*488mm/448*321*764mm

- Enjoy fresh soft water with hardness <30ppm
- Flow rate: 1T/h / 2T/h
- Total filter life: 5000T / 10000T

Pipe-type water purifier Product



FU-Q5240



Total net water volume



High flow rate

φ115×600mm

- 41.7L/min constant water flow
- 50000L total purification capacity

Embedded water dispenser Product



E-Q5440



Instant heat technology



UV sterilization

595*434*455mm

- 2.3L water storage tank
- 3S Instant heat technology

Our dedication

to ensuring clean water helps our various business partners advance

- Restaurants
- Airports
- Offices
- Schools



QS-ZRW-L58

580*530*1730mm

5 filter cartridges

Filter out 104 kinds of harmful substances

2L/min

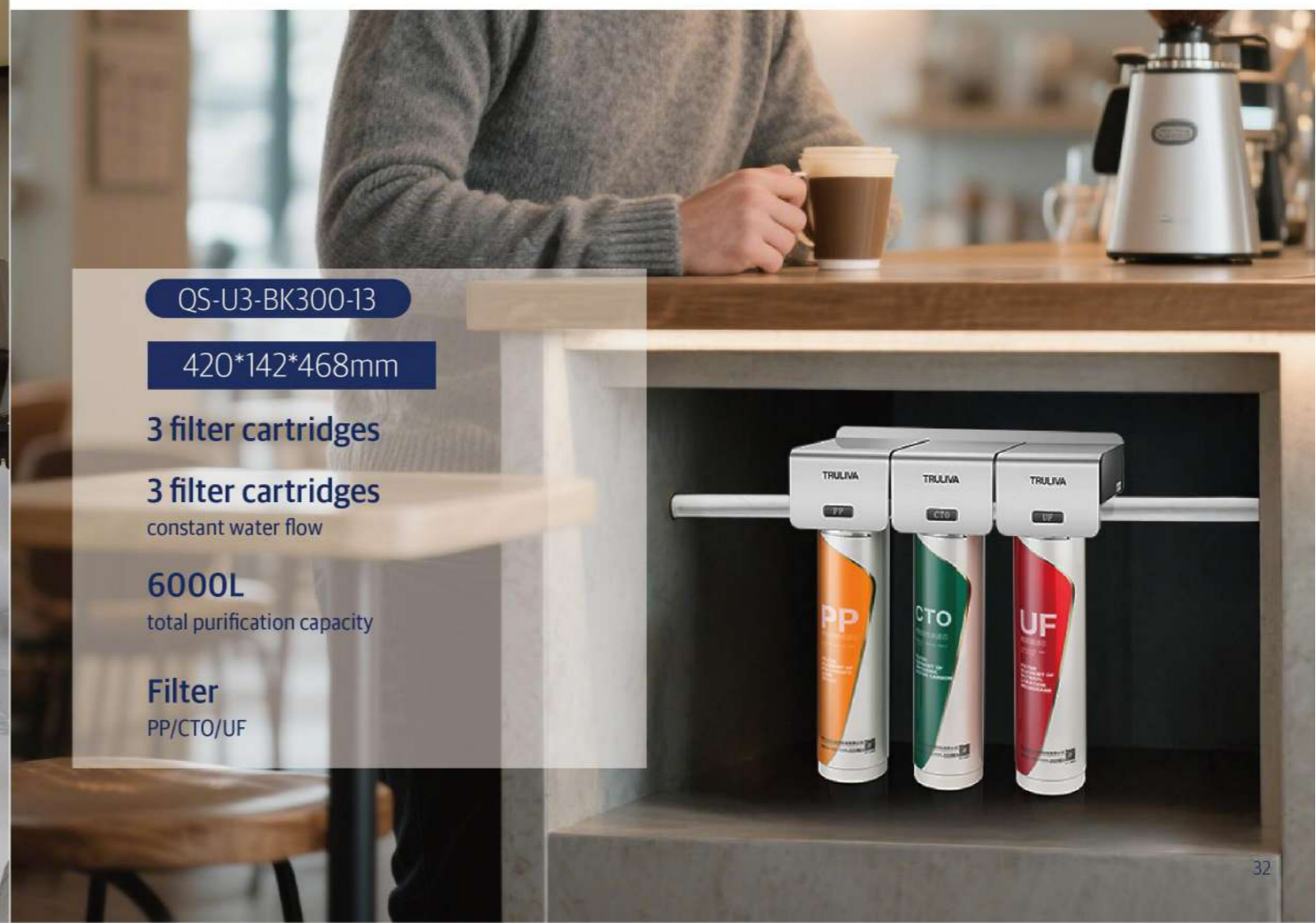
constant water flow

8000L

total purification capacity

Filter

PP/PGP/CTO/RO/CTO



QS-U3-BK300-13

420*142*468mm

3 filter cartridges

3 filter cartridges

constant water flow

6000L

total purification capacity

Filter

PP/CTO/UF

cooperative brand





Open Healthy & Elegant Life



OPEN



LOVE



WATER



ART

COMPANY PROFILE

NINGBO AQUART ELECTRICAL APPLIANCE CO.,LTD

NINGBO AQUART ELECTRICAL APPLIANCE CO., LTD., (Former QINYUAN GROUP CO., LTD.), is a professional household appliance company specialized in the research, development and manufacture of household water dispenser & water purifier, ice maker and car refrigerator for 27 years.

aquart has been a qualified supplier of many world's top 500 brands, including Electrolux, Haier, Home Depot, Whirlpool, etc. We have strong design capability, professional engineer team, and friendly customer service team. We're providing our customers with best products and service under OEM.

aquart is located in Hangzhou Bay New District, Ningbo, Zhejiang, China, covering an area of 98000m², equipped with advanced production equipment and test devices, passed ISO9001 quality management system, ISO14001 environment management system and ISO45001 occupational health and safety management system. The annual production capacity is 2.5 million sets of water dispenser, 2 million sets of water purifier and 2 million sets of ice maker and car refrigerator .

aquart has obtained CE/CB/SASO/SONCAP/ROHS/UL/ INMETRO/NOM and other mainstream international certifications. After years of development, AQUART has become the leader in the export trade of water dispenser & water purifier for a long time.

aquart will always adhere to the concept of Open Healthy & Elegant Life.



NINGBO AQUART ELECTRICAL APPLIANCE CO.,LTD

Http : www.aquart.cn

Add : 298 Binhai Avenue, Hangzhou Bay New District, Ningbo. 315336 China

Tel : + 86-574-63079658 + 86-574-63937122

WATER DISPENSER WITH ICE MAKER

LYCZ628-B1



Hot water



Fresh water



Cold water



Ice cubes



WATER DISPENSER WITH ICE MAKER



BYCZ565



310x355x1052mm

- Low energy consumption
- Chilled water
- Hot, Cold & Room temperature water
- Stainless steel base
- Touch panel



LYCZ628-B1



310x420x1035mm

- Low energy consumption
- Chilled water
- Hot, Cold & Room temperature water
- Stainless steel base
- Touch panel



LYCZ629-B1



310x420x1035mm

- Low energy consumption
- Chilled water
- Hot, Cold & Room temperature water
- Stainless steel base
- Touch panel





NUGGET ICE MAKER

Enjoy coolness anytime & anywhere.



Capacity



Fast Ice Making



Silent Operation



Self Cleaning

ICE MAKER



BULLET ICE MAKER



ICN1505

425x260x425mm

- Nugget ice
- 3.4L water capacity
- Touch control panel
- 24-hour ice production 15KG/20KG



IC3001

500x360x423mm

- Cube ice
- 3.8L water capacity
- Single ice release 36PCS
- 24-hour ice production 30KG



IC7001

410x498x785mm

- Cube ice
- Ice storage 18KG
- Single ice release 78PCS
- 24-hour ice production 70KG



IC1218

298x225x290mm

- Bullet ice
- 1.3L water capacity
- Ice storage 0.60KG/90PCS
- 24-hour ice production 10KG



IC1202

320x220x315mm

- Bullet ice
- 1.8L water capacity
- Ice storage 0.60KG/90PCS
- 24-hour ice production 12KG



IC1220

285x210x266mm

- Bullet ice
- 1.1L water capacity
- Ice storage 0.60KG/99PCS
- 24-hour ice production 10KG

STANDING WATER DISPENSER



BY509

260x330x1010mm

- Top loading
- Chilled water
- Hot & cold water temperature
- Compressor cooling
- Electronic cooling



BY566

300x322x948mm

- Top loading
- Chilled water
- Hot & cold water temperature
- Compressor cooling
- Electronic cooling



BY566-A

300x322x948mm

- Top loading
- Chilled water
- Hot & cold water temperature
- Compressor cooling
- Electronic cooling

PIPELINE WATER DISPENSER



FY2108

300x395x1110mm

- Filter precision:RO:0.0001um
UF:0.01-0.1um
- Outflow rate:3L/min
- Chilled water
- Hot, room & cold water temperature

BOTTOM LOADING WATER DISPENSER



BY1185

310x355x1035mm

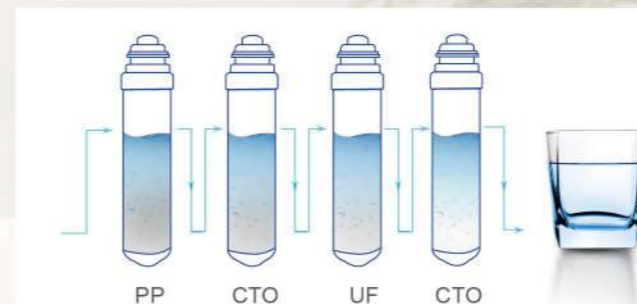
- Bottom loading
- Chilled water
- Hot, room & cold water temperature
- Compressor cooling
- Electronic cooling

WATER DISPENSER

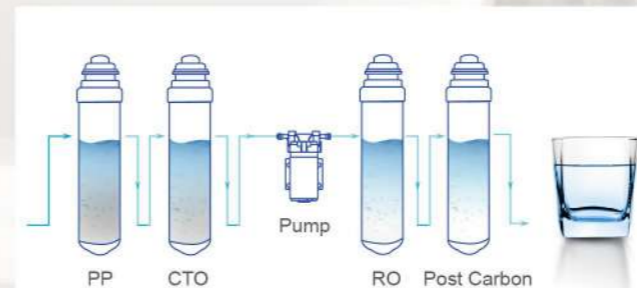
Enjoy anytime & anywhere.

PIPELINE

UF filtration



RO filtration



aquart

KITCHEN APPLIANCE



AIR FRYER



AF1605



364x375x350mm

- Digital touch display
- DIY and Delay function
- Visual window design for easy control
- Detachable door for easy cleaning
- Up & down available



AF6001



400x400x340mm

- Digital touch display
- Visual window design for easy control
- Cool-touch handle
- Innovative dynamic airflow technology
- Safety power cut off



AF1601



280x440x447mm

- Digital touch display
- 2 layers cooking & adjustable tray
- Detachable handle
- Visual window design for easy control
- Creative air flow system

NINGBO AQUART KITCHEN APPLIANCE CO.,LTD

Add.: No.78,2nd Binhai Road, Hangzhou Bay New District, Ningbo, 315336, China

Tel.: +86-15088463787

web.: www.aquart.com.cn

43 Email.: biz@aquart.cn

DUAL AIR FRYER OVEN

Discover More Possibilities of Cooking



AF2503

247x318x320mm

- 1000W
- 3.0 Liter capacity
- Adjustable timer 0-60min
- Innovative dynamic airflow technology



AF4001

262x318x290mm

- 1500W
- 4.0 Liter capacity
- Adjustable timer 0-60min
- Innovative dynamic airflow technology



AF5506

274x345x326mm

- 1500W
- 5.5 Liter capacity
- Digital touch display
- Innovative dynamic airflow technology



AF6011

286x369x305mm

- 1700W
- 6.5 Liter capacity
- Digital touch display
- Up & down heating available



AF7965

296x409x342mm

- 1700W&1800W
- 9.1 Liter capacity
- Digital touch display
- Up & down heating available



AF1202S

410x498x785mm

- 1700W
- 12 Liter capacity
- Digital touch display
- Easy cleaning metal cavity



UISH

**FOOD PURIFICATION
SPECIALIST SINCE 2017**



COMPANY PROFILE

Zhejiang Uish Environmental Technology Co., Ltd.

Zhejiang UISH Environmental Technology Co., Ltd. is a high-tech enterprise in the research, development, production, sales, and service of household and commercial food purification equipment. The company was established in 2017 and affiliated with Yongchao Industrial Group, its founding team is composed of core members of Qianqinyuan. The factory is in Hangzhou Bay New Area, Ningbo, Zhejiang Province, China

UISH has successfully developed a series of products including household and commercial food purification, drinking water purification, and air purification products with 20 years of experience in water purification and its "micro-nano bubble Ozone hydroxyl (UISH MOH+)" technology. Among them, more than 20 clean food products, more than 150 patent applications, and 2 German patents.

UISH has a standardized clean workshop with an annual output of 600,000 food purifiers, 2 automated production lines, and a complete quality control system (ISO9001, ISO14001, and ISO45001). It has successfully provided OEM for Panasonic, Fudan Shenhua, Oaks, Olin, and other brands. OEM service.

Address: No. 78 Binhai 2nd Road, Qianwan New Area, Ningbo, Zhejiang Province
Tel: +86-574- 6309-7130
Domestic: susan@zjuish.com | 86-1356-6006-923
Oversea: sales@zjuish.com | 86-1373-8810-686
Website: <https://www.zjuish.com/>



Commercial



US-I20

- DC 12V
Rated Voltage
- 65W
Rated Power
- Touch Screen
Control Mode
- 2.7kg/3.5kg
Net Weight/Gross Weight

225×95×167mm 135×127×205mm

host size

Main dimensions of the kitchen

Household



US-I07

Φ135×260mm

- DC 12V
Rated Voltage
- 40W
Rated Power
- Touch Screen
Control Mode
- 1.6kg/2.5kg
Net Weight/Gross Weight
- 2013/4512 sets
Loading Capacity (20GP/40HQ)



US-I08-B

323x107x227mm

- DC 12V
Rated Voltage
- 40W
Rated Power
- Touch Screen
Control Mode
- 2.5kg/3.3kg
Net Weight/Gross Weight
- 1152/2772 sets
Loading Capacity (20GP/40HQ)



US-I06-A

260x250x180mm

- DC 12V
Rated Voltage
- 65W
Rated Power
- Mechanical Control
Control Mode
- 1.8kg/3.1kg
Net Weight/Gross Weight
- 1008/2064 sets
Loading Capacity (20GP/40HQ)



US-C02

480x382x135mm 607x495x338mm

Product Dimensions

Carton Dimensions

- 110-240V/50-60Hz
Rated Voltage
- 210W
Rated Power
- Carton
Packaging Method
- 10.4kg/15.1kg
Net Weight/Gross Weight
- 276/689 sets
Loading Capacity (20GP/40HQ)



US-C08

480x382x135mm 607x495x338mm

Product Dimensions

Carton Dimensions

- 110-240V/50-60Hz
Rated Voltage
- 210W
Rated Power
- Carton
Packaging Method
- 10.4kg/15.1kg
Net Weight/Gross Weight
- 276/689 sets
Loading Capacity (20GP/40HQ)



US-C09

480x382x135mm 607x495x338mm

Product Dimensions

Carton Dimensions

- 110-240V/50-60Hz
Rated Voltage
- 260W
Rated Power
- Carton
Packaging Method
- 10.4kg/15.1kg
Net Weight/Gross Weight
- 276/689 sets
Loading Capacity (20GP/40HQ)



AIRPLUS

FOCUS ON HEALTHY ENVIRONMENT APPLIANCES

NINGBO AQUART ENVIRONMENTAL APPLIANCE CO.,LTD

Address: No.189, Songpu 2nd Road, Cixi Binhai Economic Development Zone, Ningbo, Zhejiang, China

Domestic Sales Department: 0574-56336187

National Service Hotline: 400-138-5858

Website: www.airplus-world.com

PORTABLE AIR CONDITIONER



KY-29B1



LOW NOISE



24 HOURS TIMERS



DEFROST AUTOMATICALLY



MULTIPLE WIND SPEED



WIFI AVAILABLE

300x339x825mm

- 9000Btu/h
Cooling capacity
- 220V~/50Hz
Voltage/frequency
- 1050W/4.55A
Cooling input power/current
- 1250W
Maximum Input
- ≤54dB(A)
Noise
- 400m³/h
Circulating air volume
- 23kg
Net Weight
- 27kg
Gross Weight



KY-17C1



LOW NOISE



24 HOURS TIMERS



DEFROST AUTOMATICALLY



MULTIPLE WIND SPEED



WIFI AVAILABLE

290x310x712mm

- 6000Btu/h
Cooling capacity
- 220V~/50Hz
Voltage/frequency
- 800W/3.47A
Cooling input power/current
- 1000W
Maximum Input
- ≤53dB(A)
Noise
- 250m³/h
Circulating air volume
- 20kg
Net Weight
- 24kg
Gross Weight

DEHUMIDIFIER



- 24 HOURS TIMERS
- LAUNDRY FUNCTION
- APP Intelligent Internet of Things
- INTELLIGENT HUMIDITY CONTROL SYSTEM EASY OPERATION
- FREE CHOICE OF WIND SPEED, DEHUMIDIFICATION MODE AND DEHUMIDIFICATION HUMIDITY



AP20-2003EW

380x268x520mm

- 20L/D Dehumidification
- 4.8L Water tank capacity
- 40m² Working area
- 360W Power
- ≤48dB(A) Noise
- Low/Mid/High Speed
- 40-80% Humidity Range
- 20'FT=416 40'HQ=1022 Loading Qty(pcs)



AP25-2007EW

380x268x520mm

- 25L/D Dehumidification
- 4.8L Water tank capacity
- 50m² Working area
- 400W Power
- ≤48dB(A) Noise
- Low/Mid/High Speed
- 40-80% Humidity Range
- 20'FT=416 40'HQ=1022 Loading Qty(pcs)



AP25-2008EW

380x268x520mm

- 25L/D Dehumidification
- 4.8L Water tank capacity
- 50m² Working area
- 400W Power
- ≤48dB(A) Noise
- Low/Mid/High Speed
- 40-80% Humidity Range
- 20'FT=416 40'HQ=1022 Loading Qty(pcs)



AP16-2018EW

380x268x520mm

- 16L/D Dehumidification
- 2.8L Water tank capacity
- 32m² Working area
- 230W Power
- ≤46dB(A) Noise
- Low/Mid/High Speed
- 40-80% Humidity Range
- 20'FT=532 40'HQ=1260 Loading Qty(pcs)



AP18-2418EW

320x230x512mm

- 18L/D Dehumidification
- 2.8L Water tank capacity
- 32m² Working area
- 215W Power
- ≤46dB(A) Noise
- Low/Mid/High Speed
- 40-80% Humidity Range
- 20'FT=500 40'HQ=1050 Loading Qty(pcs)



AP18-2406EW

380x268x520mm

- 18L/D Dehumidification
- 2.8L Water tank capacity
- 32m² Working area
- 215W Power
- ≤46dB(A) Noise
- Low/Mid/High Speed
- 40-80% Humidity Range
- 20'FT=520 40'HQ=1260 Loading Qty(pcs)